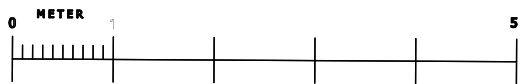
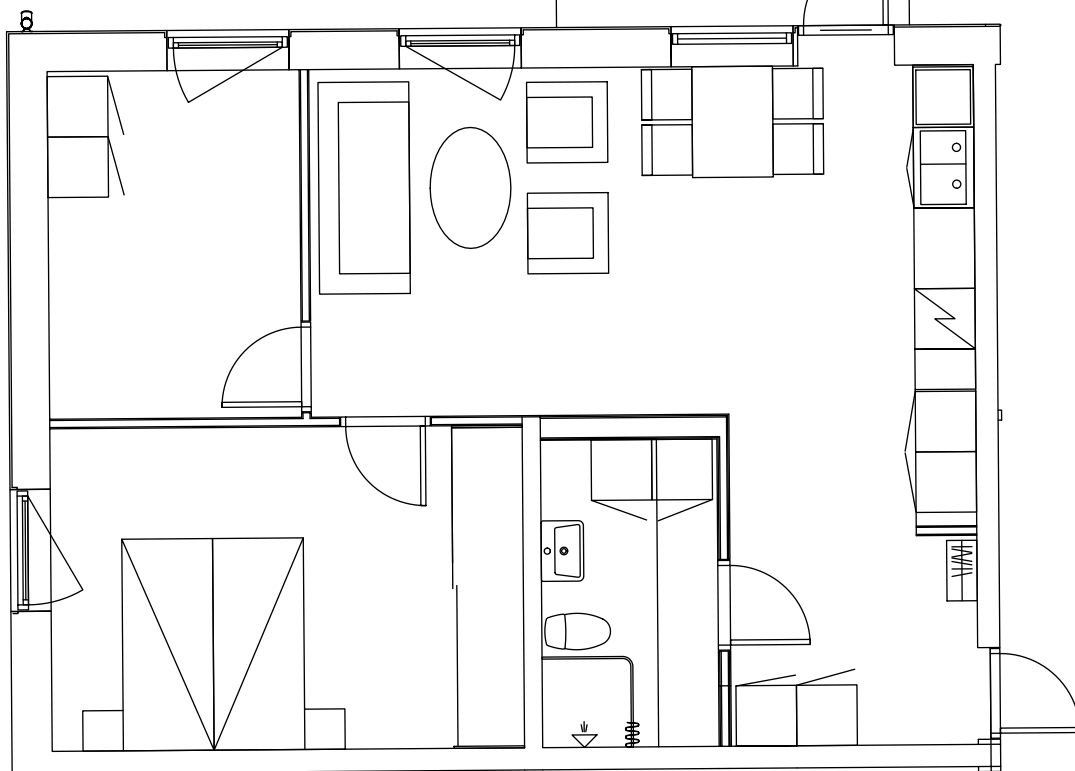
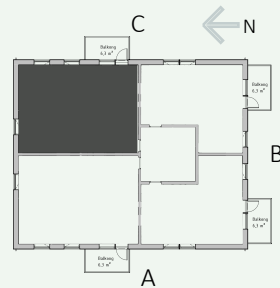
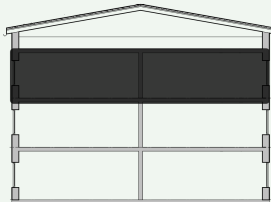


LINNEAN / HOLMSUND

LÄGENHERSNUMMER	1203
STORLEK	62,5 KVM
ANTAL RUM	3
INSATS	2.295.000 SEK
AVGIFT	4.236 SEK

PLAN 2
PLAN 1
ENTRE



SKALA 1:75

FÖRKLARING

G=GARDEROB

FRD=FÖRRÅD

ST=STÄDSKÅP

K=KYLSKÅP

F=FRYS

U=UGN

TT=TORKTUMLARE

TM=TVÄTTMASKIN

KM=UGN