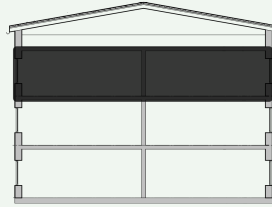


LINNEAN / HOLMSUND

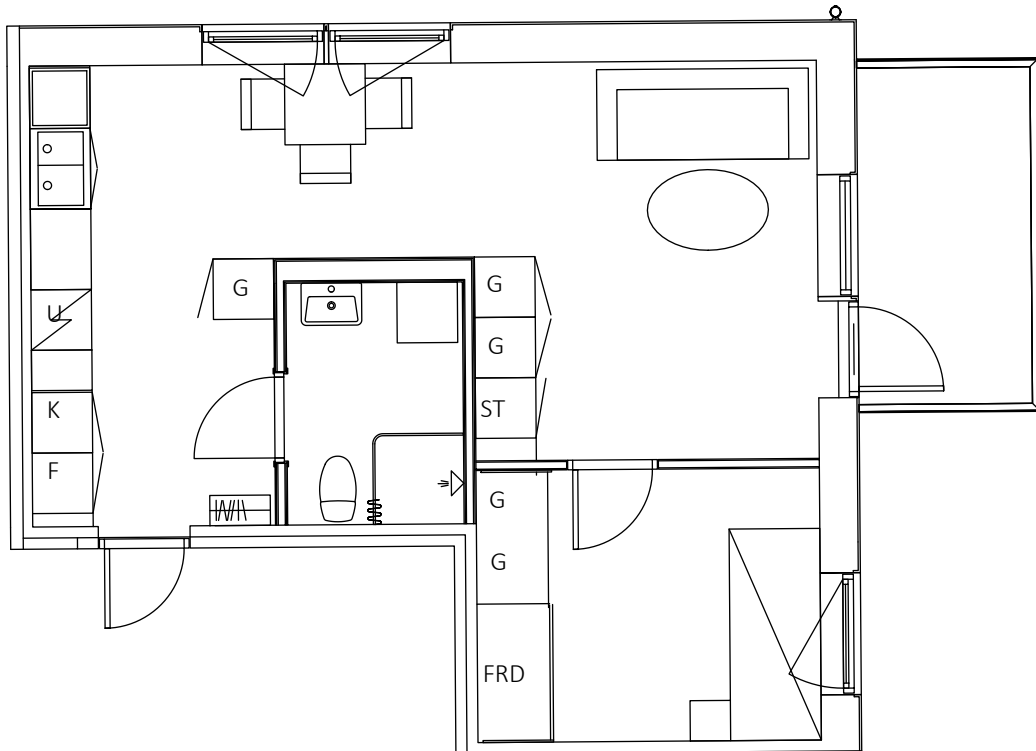
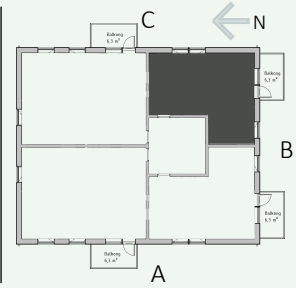
LÄGENHERSNUMMER	1204
STORLEK	43,7 KVM
ANTAL RUM	2
INSATS	1.625.000 SEK
AVGIFT	3.096 SEK

PLAN 2



PLAN 1

ENTRE



SKALA 1:75

FÖRKLARING

G=GARDEROB

FRD=FÖRRÅD

ST=STÄDSKÅP

K=KYLSKÅP

F=FRYS

U=UGN

TT=TORKTUMLARE

TM=TVÄTTMASKIN

KM=UGN