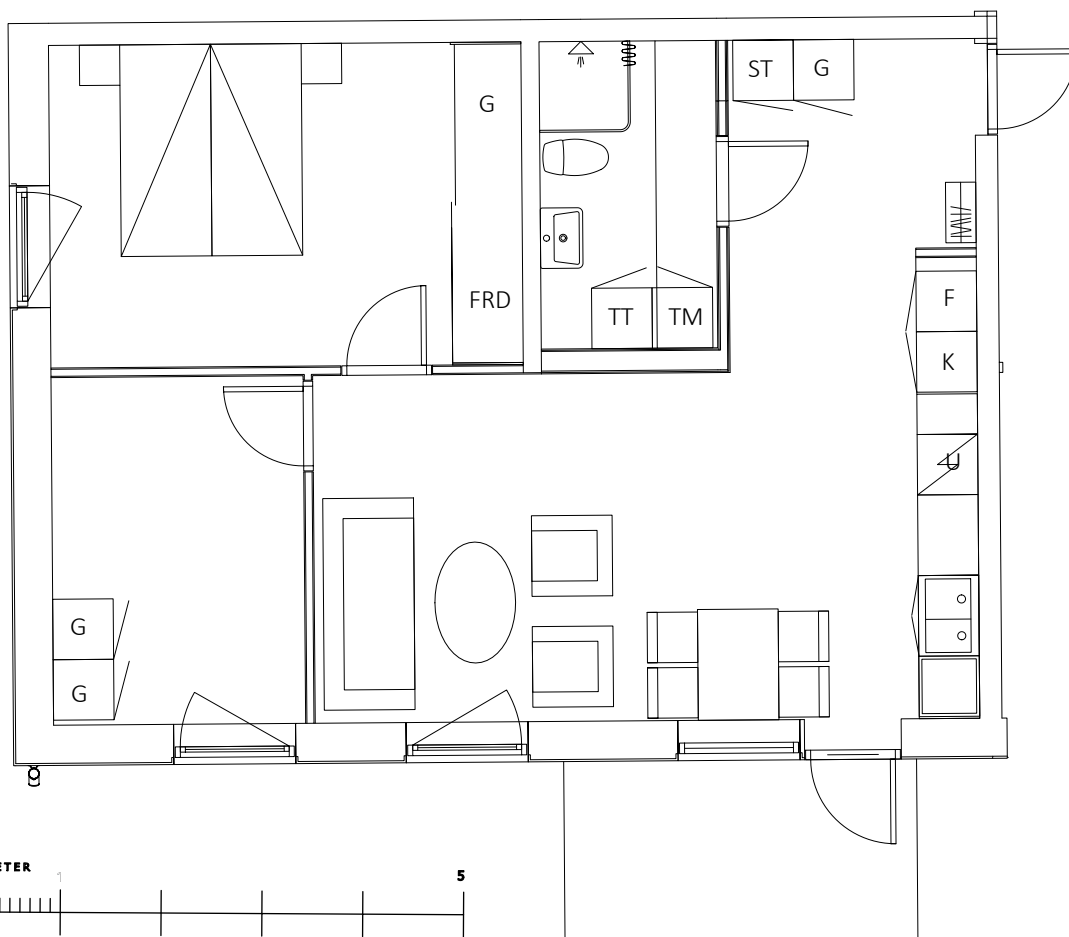
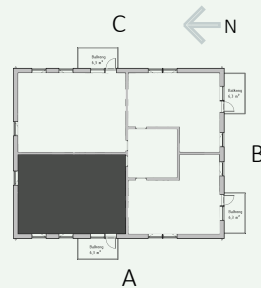
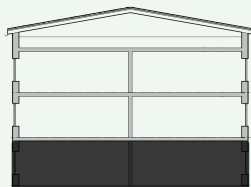


LINNEAN / HOLMSUND

LÄGENHERSNUMMER	1001
STORLEK	62,5 KVM
ANTAL RUM	3
INSATS	2.125.000 SEK
AVGIFT	4.236 SEK

PLAN 2
PLAN 1
ENTRE



SKALA 1:75

FÖRKLARING

G=GARDEROB
FRD=FÖRRÅD
ST=STÄDSKÅP

K=KYLSKÅP
F=FRYS
U=UGN

TT=TORKTUMLARE
TM=TVÄTTMASKIN
KM=UGN